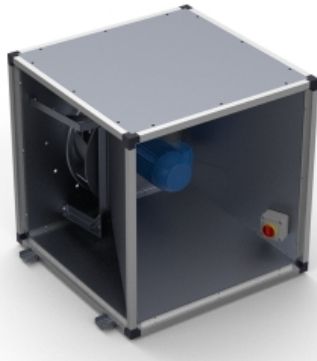


VORT QBK SAL KC EVO 315 M4 0,25kW (43151)

GENERAL DATA



VENTILATION BOX WITH REACTION IMPELLER

MANUFACTURING CHARACTERISTICS:

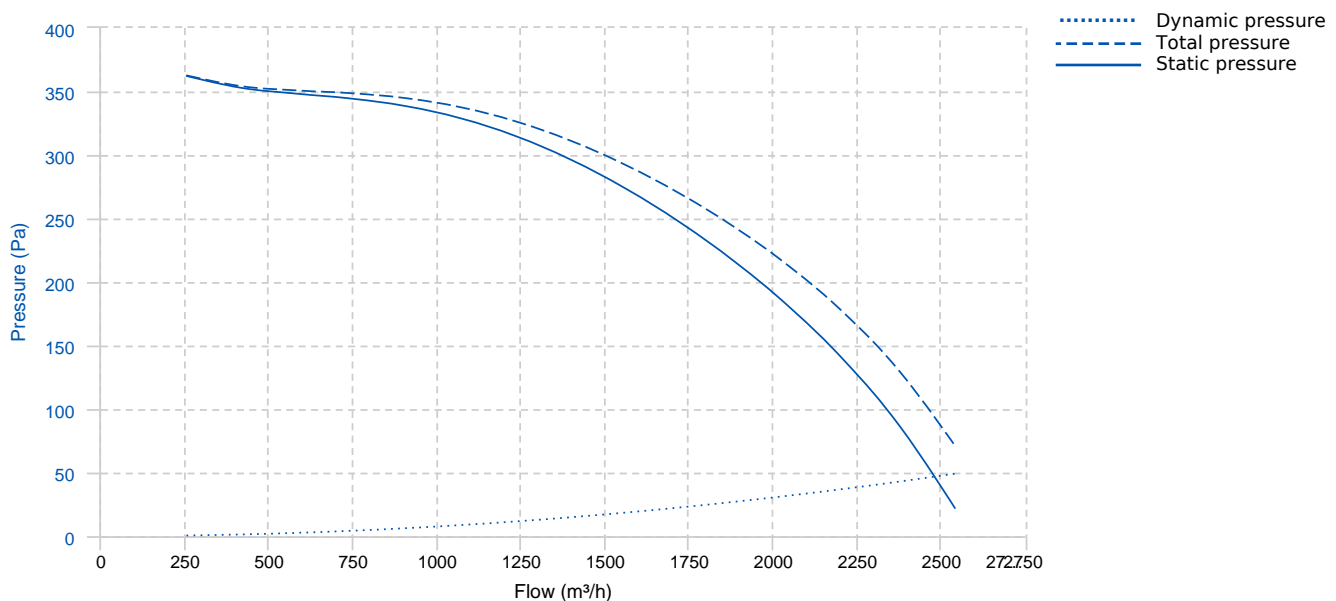
- Watertight ventilation box with very high efficiency and low noise level with 30 mm aluminum profile structure, nylon corners and galvanized steel sandwich panel with internal rock wool insulation 25 mm thick class A1 (non-combustible) and 90 kg/m³ density. All panels have a "fastening system" for easy assembly and disassembly whenever required, whether for cleaning, maintenance or panel exchange.
- Centrifugal fan with motor coupled directly to the coil type plug fan with motor outside the air flow
- Circular inlet to facilitate the connection of ducts. open outlet.
- Models with AC motor isolated from the air flow, which allows working stably with contaminated flow at temperatures higher than ambient. Standard asynchronous squirrel cage motor with IP-55 protection and Class F insulation. Standard voltages 230V 50Hz for single phase motors, 230/400V 50Hz for three phase motors up to 4kW and 400/690V 50Hz for higher powers 1 speed and 400V for 2 speed motors.
- High-performance single-aspiration impeller with backward curved blades (reaction) with self-cleaning system built in steel. Statically and dynamically balanced at origin.
- With stainless steel drainage purge for escape route of the fluid load.
- Built-in safety switch.
- Interchangeable panels on the outlet side.
- Registration panel accessible by handle

APPLICATIONS:

Designed for 90° entry-exit installation, they are suitable for:

- Air renewal in buildings and industries.
- Smoke extraction.
- Kitchen extraction.
- Designed to deal with environments with oily load.
- Maximum continuous working temperature: transported air 120°C, ambient 60°C to -25°C in three-phase motors and 50°C to -25°C in single-phase motors.

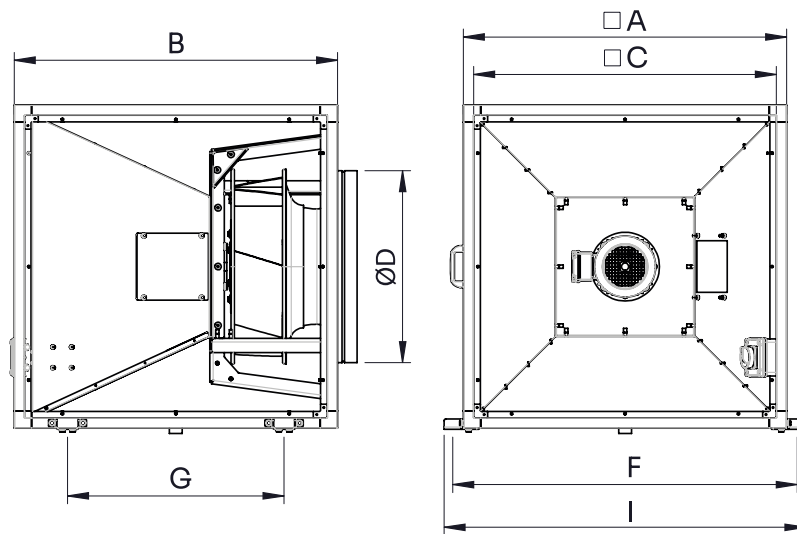
PERFORMANCE CURVE



TECHNICAL DATA

Fan							
RPM	1410	Approx. weight	37 kg	Max. Flow	2540 m ³ /h		
Motor							
Power	0,25 kW	RPM	1410	Capacitor	12μF 450V	I max. (230V)	1,6 A
Size	71	Approx. weight	6.5 kg	Efficiency (%)	68,5 %	FP	0,99

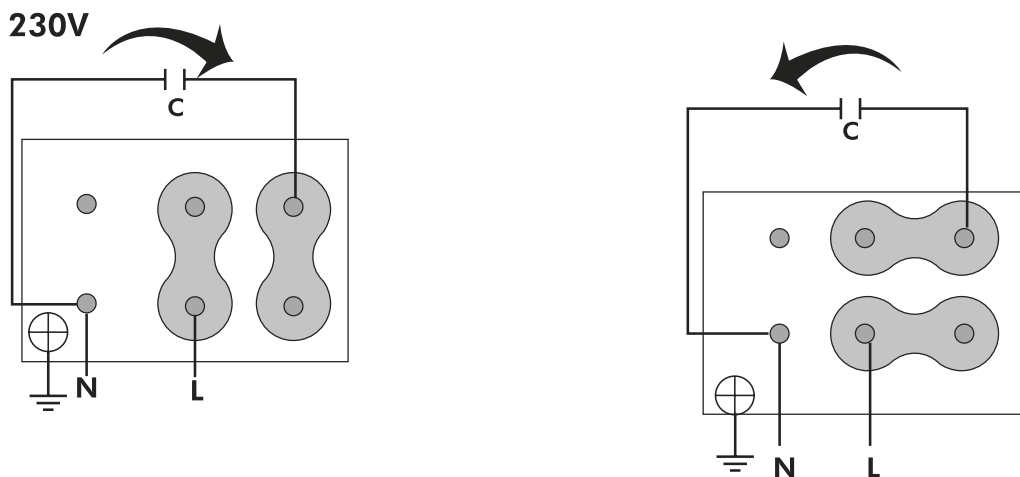
DIMENSIONS



Dimensions (mm)

A	585	B	585	C	525	D	353	F	647
G	275	I	697						

WIRING DIAGRAM



ACCESSORIES



**OUTLET BLIND COVER FOR
TIC 315**
REF: 20880



**OUTLET ROUND COVER FOR
TBIC 315**
REF: 20873



**WEATHER PROTECTIVE ROOF FOR
TEJ 315**
REF: 20887