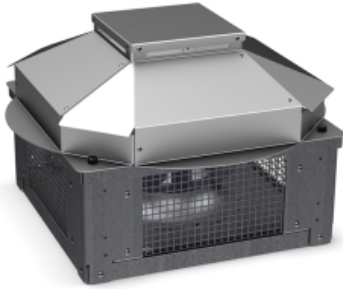


## SLIMROOF 355 T ES

### GENERAL DATA



#### ROOF FAN WITH ELECTRONIC MOTOR AND ALUMINIUM COWL

##### MANUFACTURING FEATURES:

- Protection cowl made of anticorrosive treated aluminum easily removable for motor and impeller maintenance (integrated folding system in models 500, 560 and 630).
- The design of the cowl with a rounded shape is specific to minimize the risk of water ingress due to rain.
- Structure in anticorrosive galvanized steel and support frame for adaptation to the roof with anti-bird protection grid.
- High-efficiency backward-curved blade impeller with self-cleaning system. Reinforced polyamide impeller for models 155, 190 and 220. The rest of the models in aluminum.
- EC technology uses integral electronic control to ensure that the motor always runs at optimal load and ensures efficient energy utilization. It incorporates an external rotor EC motor with high efficiency (IE4 for three phase motors and IE5 for single motors) and low noise level. Speed control through a 0-10V or PWM signal. 230V 50/60Hz single-phase power supply for models 155 to 310 and 400V 50/60Hz three-phase power supply for sizes 355 and 630. IP54 and motor class B insulation.

##### APPLICATIONS

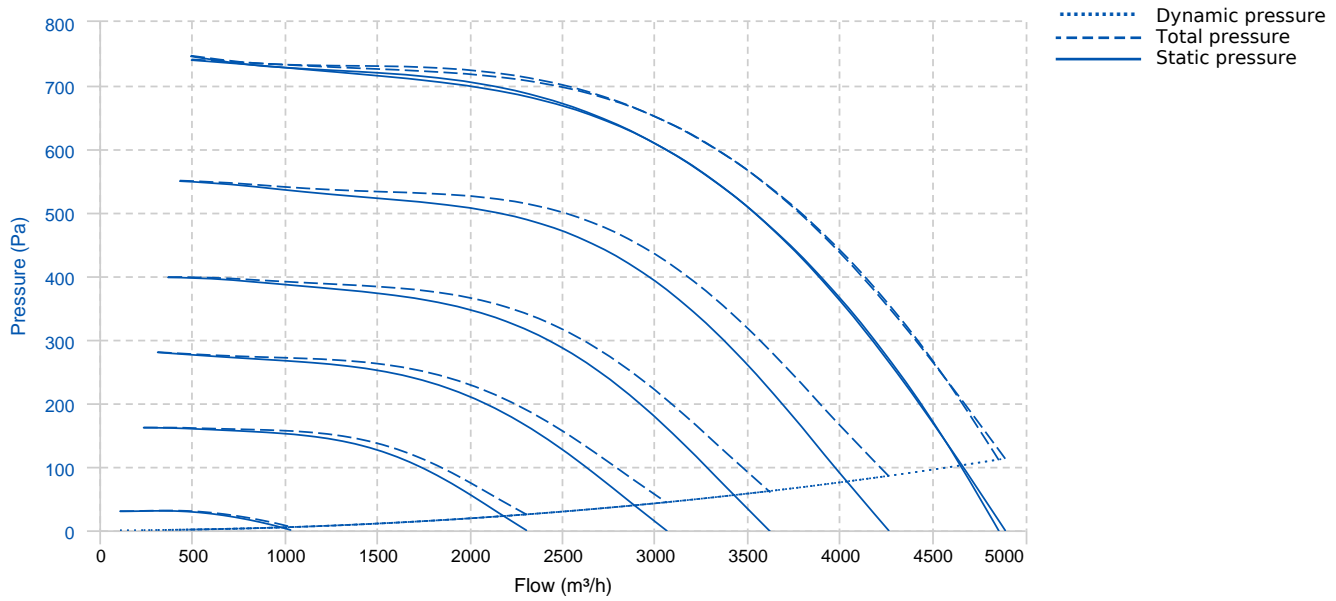
Designed for deck or roof mounting, they are indicated for:

- Smoke extraction.
- Air renewal in all types of buildings and industries.
- Working temperature range from -20°C to 60°C for models size 155-310, -25°C to 60°C for 355-450 sizes, -30°C to 50°C for size 500 and -30°C to 40°C for 560 and 630 models.

##### UNDER REQUEST

- Fan (size between 250 and 450) with k-factor reading.

## PERFORMANCE CURVE



## TECHNICAL DATA

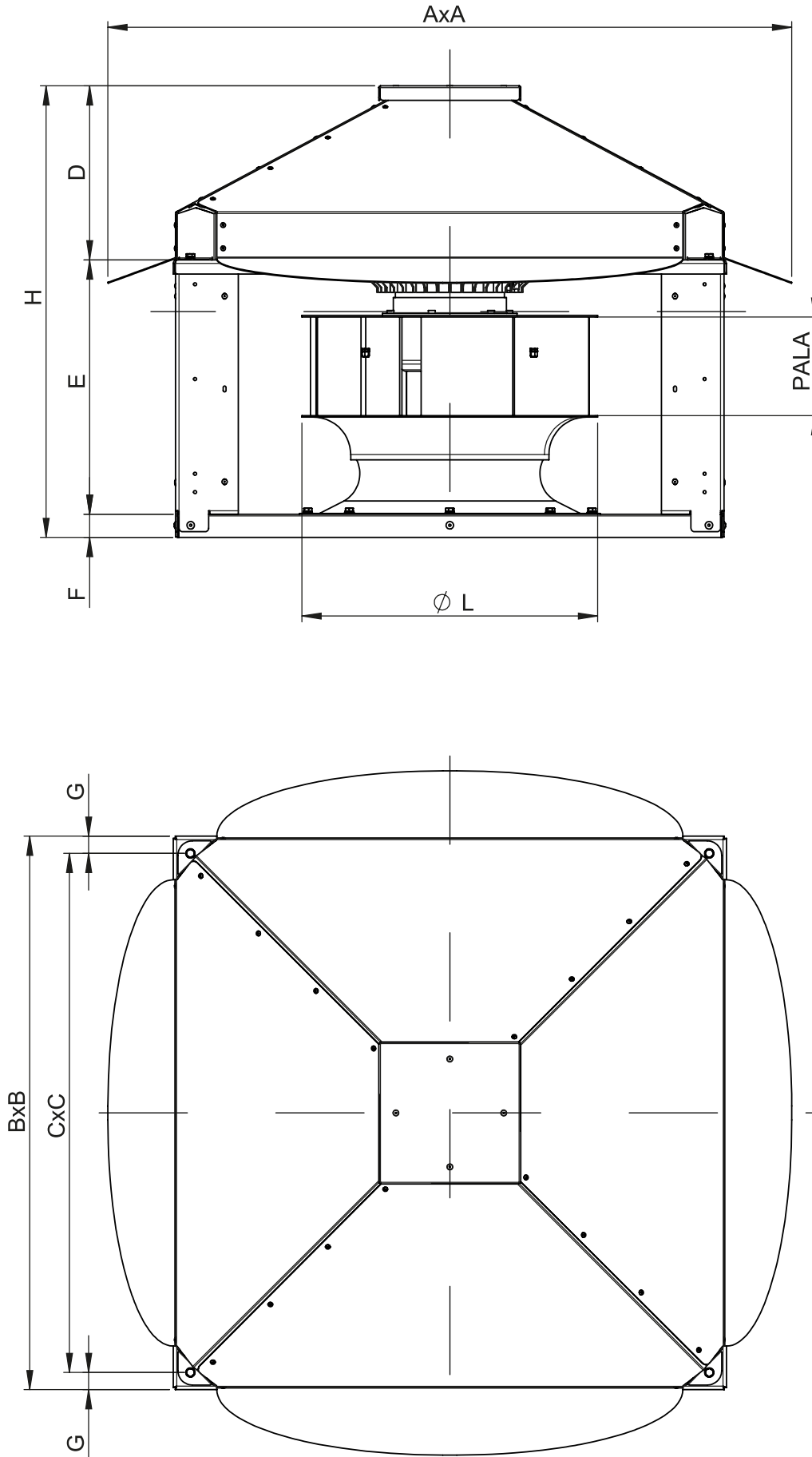
### Fan

RPM	2100	Approx. weight	28 kg	Max. Flow	4890 m³/h
-----	------	----------------	-------	-----------	-----------

### Motor

Power	0,99 kW	RPM	2100	I max. (400V)	1,63 A	Approx. weight	10.5 kg
-------	---------	-----	------	---------------	--------	----------------	---------


## DIMENSIONS




## Dimensions (mm)

A	722	B	610	C	550	D	180	E	295
F	30	G	30	H	475	PALA	115	ØL	360

## WIRING DIAGRAM

Nº	Signal Señal	Colour Color	Specification Especificación
1	L1	Black Negro	AC380V-50/60Hz
2	L2	Black Negro	AC380V-50/60Hz
3	L3	Black Negro	AC380V-50/60Hz
4	Pe	Yellow-Green Amarillo-Verde	

Nº	Signal Señal	Colour Color	Specification Especificación
1	Vcc	Red Rojo	DC10V
2	Vsp	Yellow Amarillo	0-10VDC/PWM
3	GND	Blue Azul	
4	FG	White Blanco	12 Pulse/R

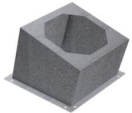
## ACCESSORIES



**SAFETY SWITCH  
SWT 25 3P**  
REF: 21673



**CIRCULAR-CIRCULAR ANTI-VIBRATION FLANGE  
BAD 10**  
REF: 20770



**INCLINED ROOF FAN SUPPORT  
BTI 570 D=0 C=B**  
REF: 20761



**ENKELROOF VERTICAL DISCHARGE  
KV SLIMROOF 355**  
REF: 20828



**BTI + ACMP MOUNTED  
BTI+ACMP 570 D=0 C=B**  
REF: 20859



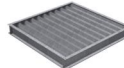
**BTI + ACMP+AMC MOUNTED  
BTI+ACMP+AMC 570 D=0 C=B**  
REF: 20869



**CONECTION FLANGE  
MFLAC 35/14**  
REF: 20236



**SPEED CONTROLLER WITH SAFETY SWITCH FOR  
EEC MOTOR  
PMR**  
REF: 20841



**DEPRESSION DAMPER (HORIZONTAL or  
VERTICAL PLACEMENT)  
CMP-HUT 300x310**  
REF: 2076+3



**CIRCULAR SOUND ATTENUATOR IN GALVANISED  
STEEL  
SILC-MINI 355 C**  
REF: 20822



**BTI + AMC MOUNTED  
BTI+AMC 570 D=0 C=B**  
REF: 20865