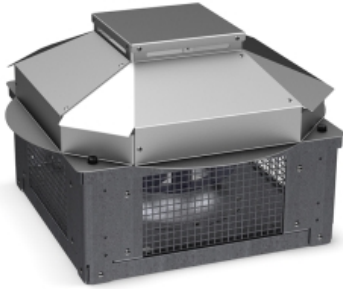


SLIMROOF 500 T ES

GENERAL DATA



ROOF FAN WITH ELECTRONIC MOTOR AND ALUMINIUM COWL

MANUFACTURING FEATURES:

- Protection cowl made of anticorrosive treated aluminum easily removable for motor and impeller maintenance (integrated folding system in models 500, 560 and 630).
- The design of the cowl with a rounded shape is specific to minimize the risk of water ingress due to rain.
- Structure in anticorrosive galvanized steel and support frame for adaptation to the roof with anti-bird protection grid.
- High-efficiency backward-curved blade impeller with self-cleaning system. Reinforced polyamide impeller for models 155, 190 and 220. The rest of the models in aluminum.
- EC technology uses integral electronic control to ensure that the motor always runs at optimal load and ensures efficient energy utilization. It incorporates an external rotor EC motor with high efficiency (IE4 for three phase motors and IE5 for single motors) and low noise level. Speed control through a 0-10V or PWM signal. 230V 50/60Hz single-phase power supply for models 155 to 310 and 400V 50/60Hz three-phase power supply for sizes 355 and 630. IP54 and motor class B insulation.

APPLICATIONS

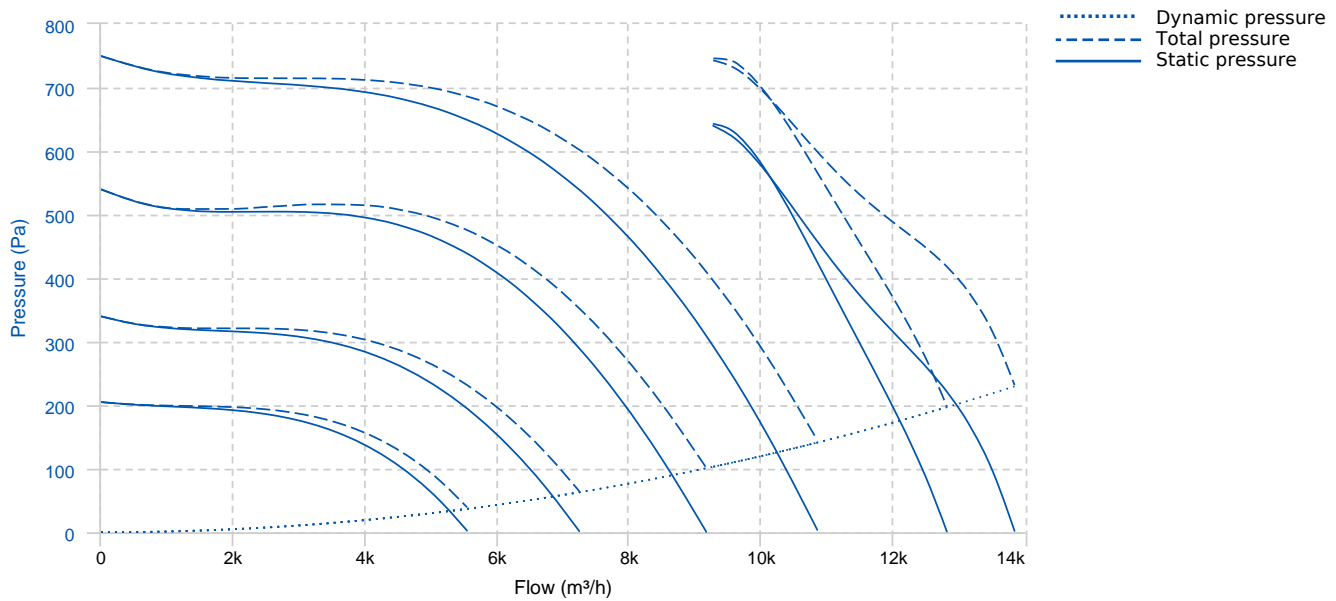
Designed for deck or roof mounting, they are indicated for:

- Smoke extraction.
- Air renewal in all types of buildings and industries.
- Working temperature range from -20°C to 60°C for models size 155-310, -25°C to 60°C for 355-450 sizes, -30°C to 50°C for size 500 and -30°C to 40°C for 560 and 630 models.

UNDER REQUEST

- Fan (size between 250 and 450) with k-factor reading.

PERFORMANCE CURVE



TECHNICAL DATA

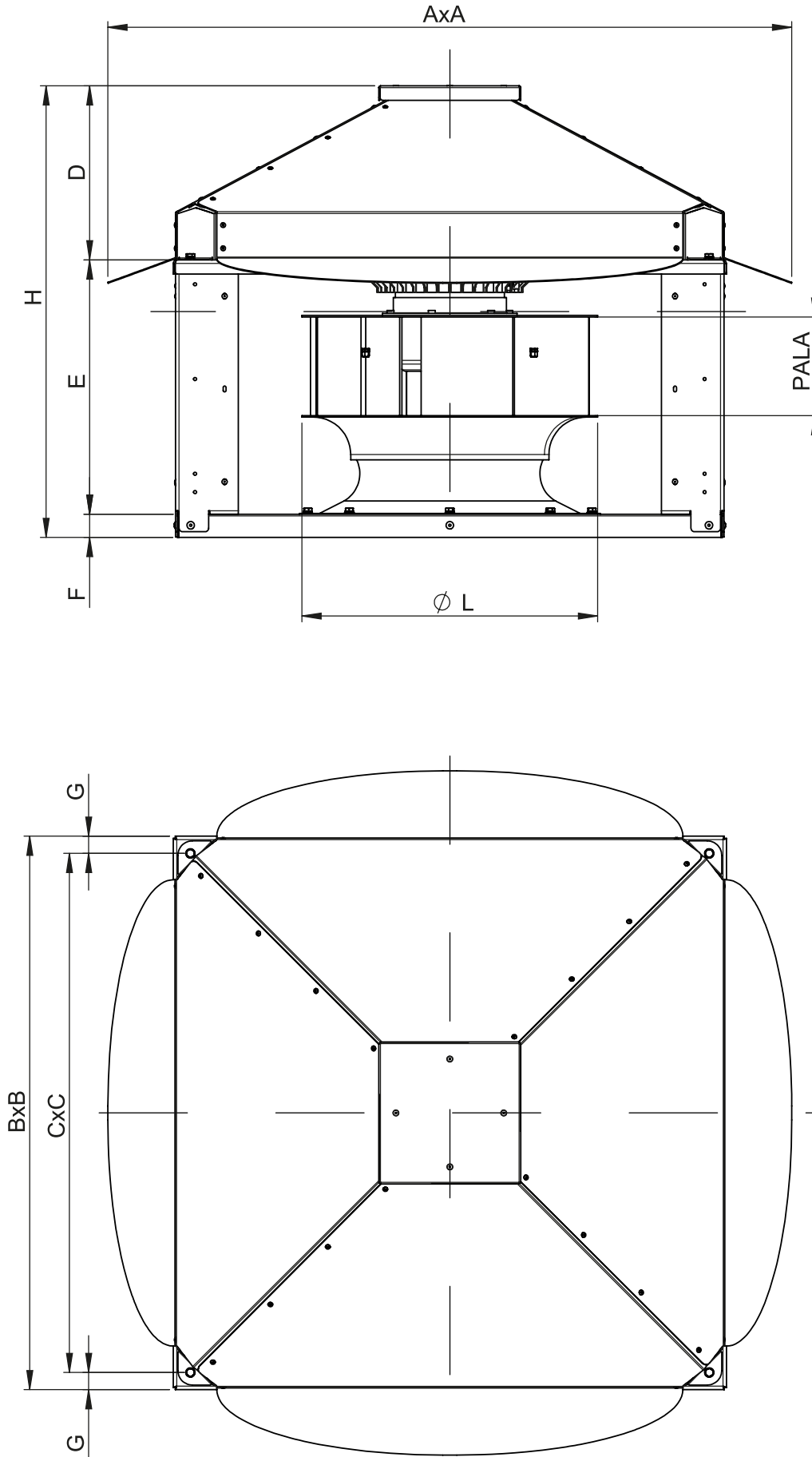
Fan

RPM	1800	Approx. weight	117 kg	Max. Flow	13850 m³/h
-----	------	----------------	--------	-----------	------------

Motor

Power	3 kW	RPM	1800	I max. (400V)	4,95 A	Approx. weight	25 kg
-------	------	-----	------	---------------	--------	----------------	-------

DIMENSIONS



Dimensions (mm)

A	1180	B	955	C	895	D	300	E	440
F	40	G	30	H	780	PALA	175	ØL	510

WIRING DIAGRAM

Line / Línea

Nº	Signal Señal	Colour Color	Specification Especificación
1	L1	Black Negro	AC380V-50/60Hz
2	L2	Black Negro	AC380V-50/60Hz
3	L3	Black Negro	AC380V-50/60Hz
4	Pe	Yellow-Green Amarillo-Verde	$\overline{\text{T}}$

Control / Control

Nº	Signal Señal	Colour Color	Specification Especificación
1	Vcc	Red Rojo	DC10V
2	Vsp	Yellow Amarillo	0-10VDC/PWM
3	GND	Blue Azul	$\overline{\text{T}}$
4	FG	White Blanco	12 Pulse/R

Auxiliary contacts (Alarm) / Contactos auxiliares (Alarma)

Nº	Signal Señal	Colour Color	Specification Especificación
1	NO	Brown Marrón	NO
2	COM	Black Negro	COM
3	NC	Orange Naranja	NC

ACCESSORIES



**SAFETY SWITCH
SWT 25 3P**
REF: 21673



**CONNECTION FLANGE
MFLAC 50**
REF: 20962



**CIRCULAR SILENCER
SIL-C 500/500**
REF: 20812



**CIRCULAR SILENCER
SIL-C 500/750**
REF: 20813



**CIRCULAR SILENCER
SIL-C 500/1000**
REF: 20711



**CIRCULAR SILENCER
SIL-CN 500/500**
REF: 20792



**CIRCULAR SILENCER
SIL-CN 500/750**
REF: 20793



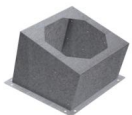
**CIRCULAR SILENCER
SIL-CN 500/1000**
REF: 20794



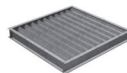
**CIRCULAR-CIRCULAR ANTI-VIBRATION FLANGE
BAD 13**
REF: 20772



**SPEED CONTROLLER WITH SAFETY SWITCH FOR
EEC MOTOR
PMR**
REF: 20841



**INCLINED ROOF FAN SUPPORT
BTI 915 D=0 C=B**
REF: 20691



**DEPRESSION DAMPER (HORIZONTAL or
VERTICAL PLACEMENT)
CMP-HUT 500x510**
REF: 20764



**BTI + ACMP MOUNTED
BTI+ACMP 915 D=0 C=B**
REF: 20861



**BTI + AMC MOUNTED
BTI+AMC 915 D=0 C=B**
REF: 20867



BTI + ACMP+AMC MOUNTED
BTI+ACMP+AMC 915 D=0 C=B
REF: 20871



ENKELROOF VERTICAL DISCHARGE
KV SLIMROOF 500
REF: 20830