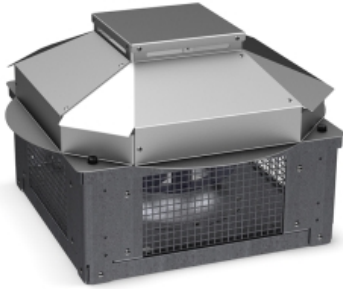


SLIMROOF 155 M ES (15271)

GENERAL DATA



ROOF FAN WITH ELECTRONIC MOTOR AND ALUMINIUM COWL

MANUFACTURING FEATURES:

- Protection cowl made of anticorrosive treated aluminum easily removable for motor and impeller maintenance (integrated folding system in models 500, 560 and 630).
- The design of the cowl with a rounded shape is specific to minimize the risk of water ingress due to rain.
- Structure in anticorrosive galvanized steel and support frame for adaptation to the roof with anti-bird protection grid.
- High-efficiency backward-curved blade impeller with self-cleaning system. Reinforced polyamide impeller for models 155, 190 and 220. The rest of the models in aluminum.
- EC technology uses integral electronic control to ensure that the motor always runs at optimal load and ensures efficient energy utilization. It incorporates an external rotor EC motor with high efficiency (IE4 for three phase motors and IE5 for single motors) and low noise level. Speed control through a 0-10V or PWM signal. 230V 50/60Hz single-phase power supply for models 155 to 310 and 400V 50/60Hz three-phase power supply for sizes 355 and 630. IP54 and motor class B insulation.

APPLICATIONS

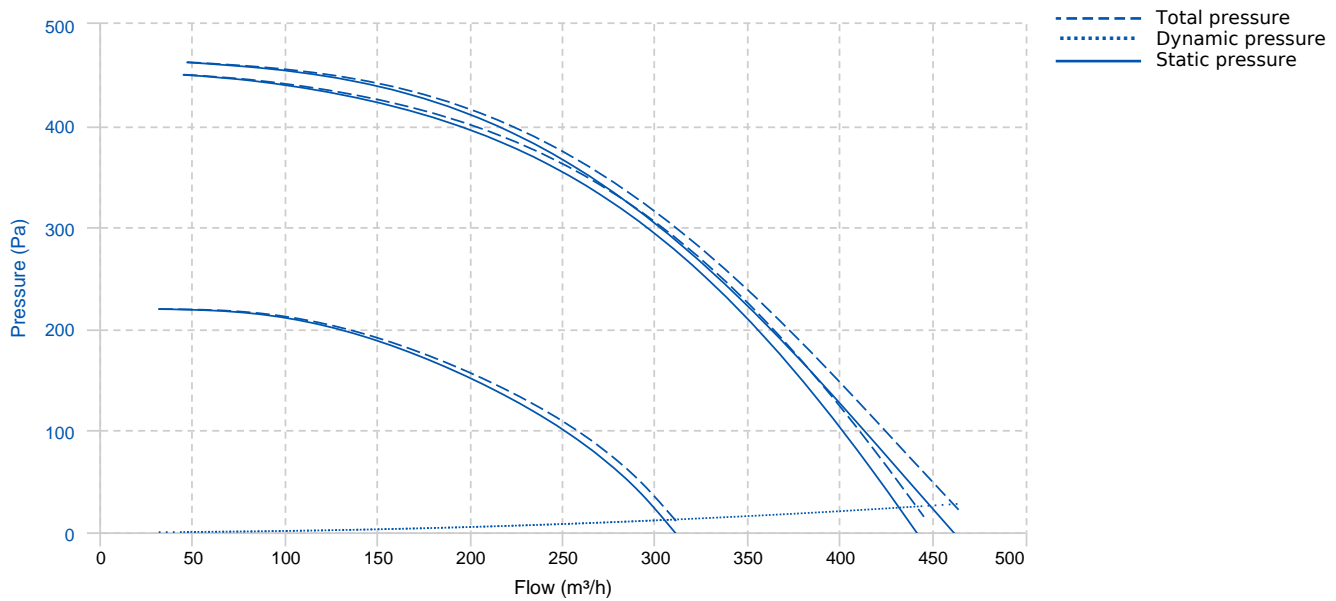
Designed for deck or roof mounting, they are indicated for:

- Smoke extraction.
- Air renewal in all types of buildings and industries.
- Working temperature range from -20°C to 60°C for models size 155-310, -25°C to 60°C for 355-450 sizes, -30°C to 50°C for size 500 and -30°C to 40°C for 560 and 630 models.

UNDER REQUEST

- Fan (size between 250 and 450) with k-factor reading.

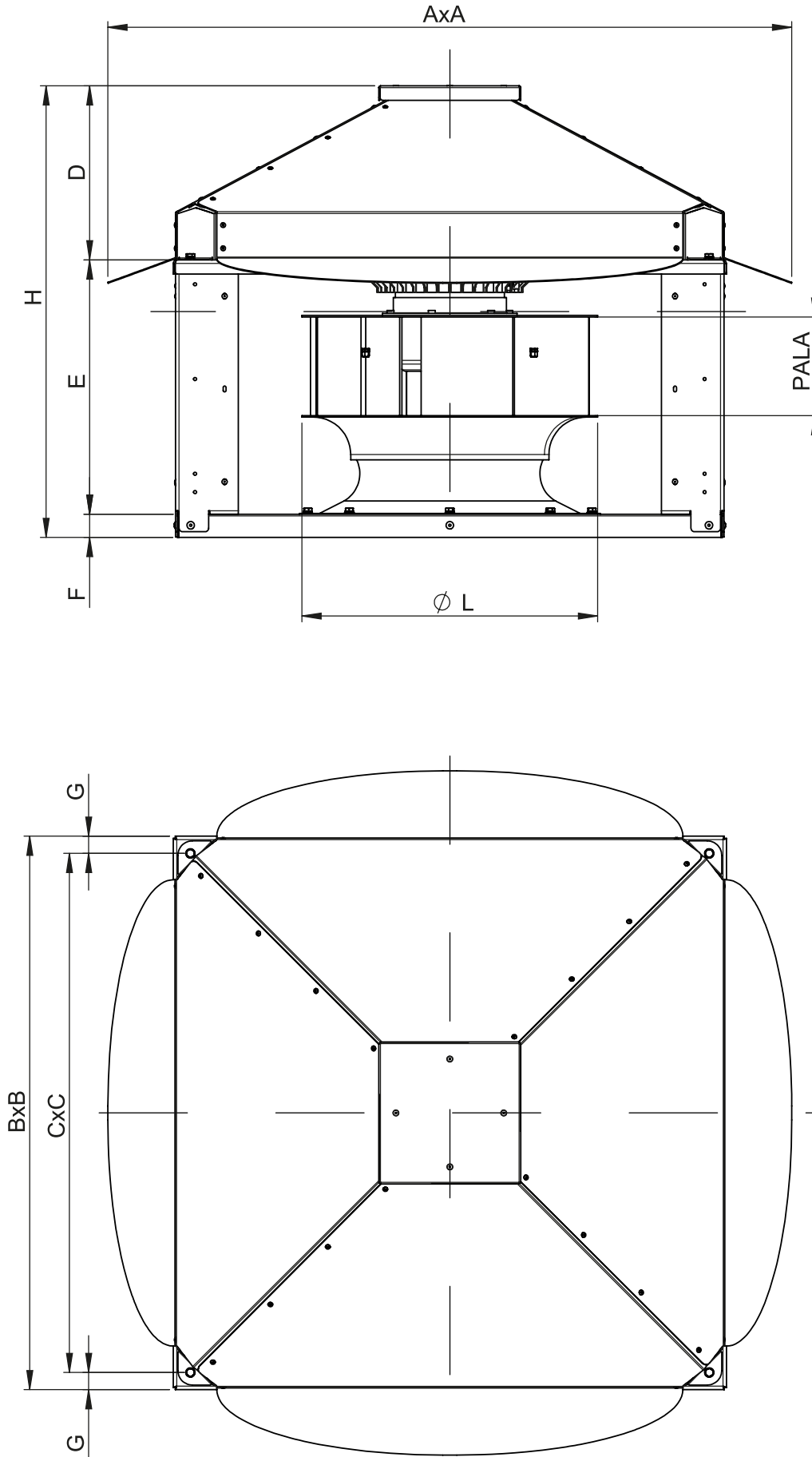
PERFORMANCE CURVE



TECHNICAL DATA

| Fan | | | | | | | |
|-------|----------|----------------|------|---------------|----------|----------------|------|
| RPM | 3950 | Approx. weight | 7 kg | Max. Flow | 460 m³/h | | |
| Motor | | | | | | | |
| Power | 0,055 kW | RPM | 3950 | I max. (230V) | 0,25 A | Approx. weight | 2 kg |


DIMENSIONS




Dimensions (mm)

| | | | | | | | | | |
|---|-----|---|-----|---|-----|------|-----|----|-----|
| A | 435 | B | 350 | C | 310 | D | 120 | E | 80 |
| F | 30 | G | 19 | H | 230 | PALA | 38 | ØL | 155 |

WIRING DIAGRAM

| Nº | Signal Señal | Colour Color | Specification Especificación |
|----|--------------|-----------------------------|---|
| 1 | L | Brown Marrón | AC 220V/50Hz |
| 2 | N | Blue Azul | AC 220V/50Hz |
| 3 | Pe | Yellow-Green Amarillo-Verde |  |

| Nº | Signal Señal | Colour Color | Specification Especificación |
|----|--------------|-----------------|---|
| 1 | GND | Blue Azul |  |
| 2 | Vsp | Yellow Amarillo | 0-10 V/PWM |
| 3 | Vcc | Red Rojo | DC 10V |
| 4 | FG | White Blanco | 1 Pulse/R |

ACCESSORIES



**SAFETY SWITCH
SWT 25 3P**
REF: 21673



**SPEED CONTROLLER FOR EEC MOTOR
POT (REGC)**
REF: 12828 (20146)



**SPEED CONTROLLER WITH SAFETY SWITCH FOR
EEC MOTOR
PMR**
REF: 20841



**ENKELROOF VERTICAL DISCHARGE
KV SLIMROOF 155-190**
REF: 20824



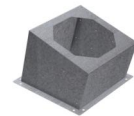
**BTI + AMC MOUNTED
BTI+AMC 310 D=0 C=B**
REF: 20863



**CONNECTION FLANGE
MFLAC 18/7**
REF: 20231



**CIRCULAR-CIRCULAR ANTI-VIBRATION FLANGE
BAD 5**
REF: 20766



**INCLINED ROOF FAN SUPPORT
BTI 310 D=0 C=B**
REF: 20759



**CIRCULAR SOUND ATTENUATOR IN GALVANISED
STEEL
SILC-MINI 160 C**
REF: 20818