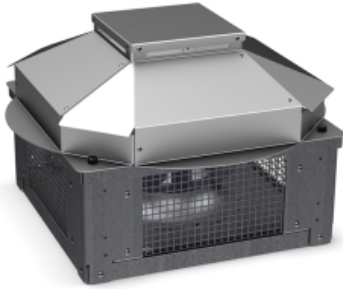


SLIMROOF 220 M ES (15273)

GENERAL DATA



ROOF FAN WITH ELECTRONIC MOTOR AND ALUMINIUM COWL

MANUFACTURING FEATURES:

- Protection cowl made of anticorrosive treated aluminum easily removable for motor and impeller maintenance (integrated folding system in models 500, 560 and 630).
- The design of the cowl with a rounded shape is specific to minimize the risk of water ingress due to rain.
- Structure in anticorrosive galvanized steel and support frame for adaptation to the roof with anti-bird protection grid.
- High-efficiency backward-curved blade impeller with self-cleaning system. Reinforced polyamide impeller for models 155, 190 and 220. The rest of the models in aluminum.
- EC technology uses integral electronic control to ensure that the motor always runs at optimal load and ensures efficient energy utilization. It incorporates an external rotor EC motor with high efficiency (IE4 for three phase motors and IE5 for single motors) and low noise level. Speed control through a 0-10V or PWM signal. 230V 50/60Hz single-phase power supply for models 155 to 310 and 400V 50/60Hz three-phase power supply for sizes 355 and 630. IP54 and motor class B insulation.

APPLICATIONS

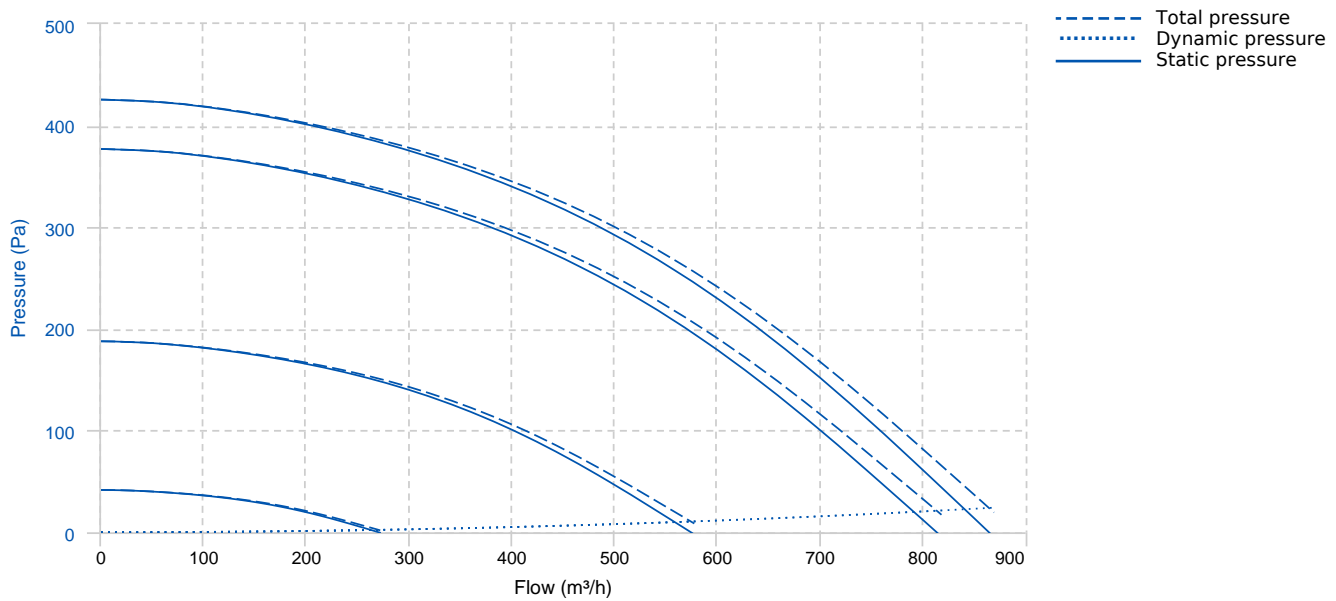
Designed for deck or roof mounting, they are indicated for:

- Smoke extraction.
- Air renewal in all types of buildings and industries.
- Working temperature range from -20°C to 60°C for models size 155-310, -25°C to 60°C for 355-450 sizes, -30°C to 50°C for size 500 and -30°C to 40°C for 560 and 630 models.

UNDER REQUEST

- Fan (size between 250 and 450) with k-factor reading.

PERFORMANCE CURVE



TECHNICAL DATA

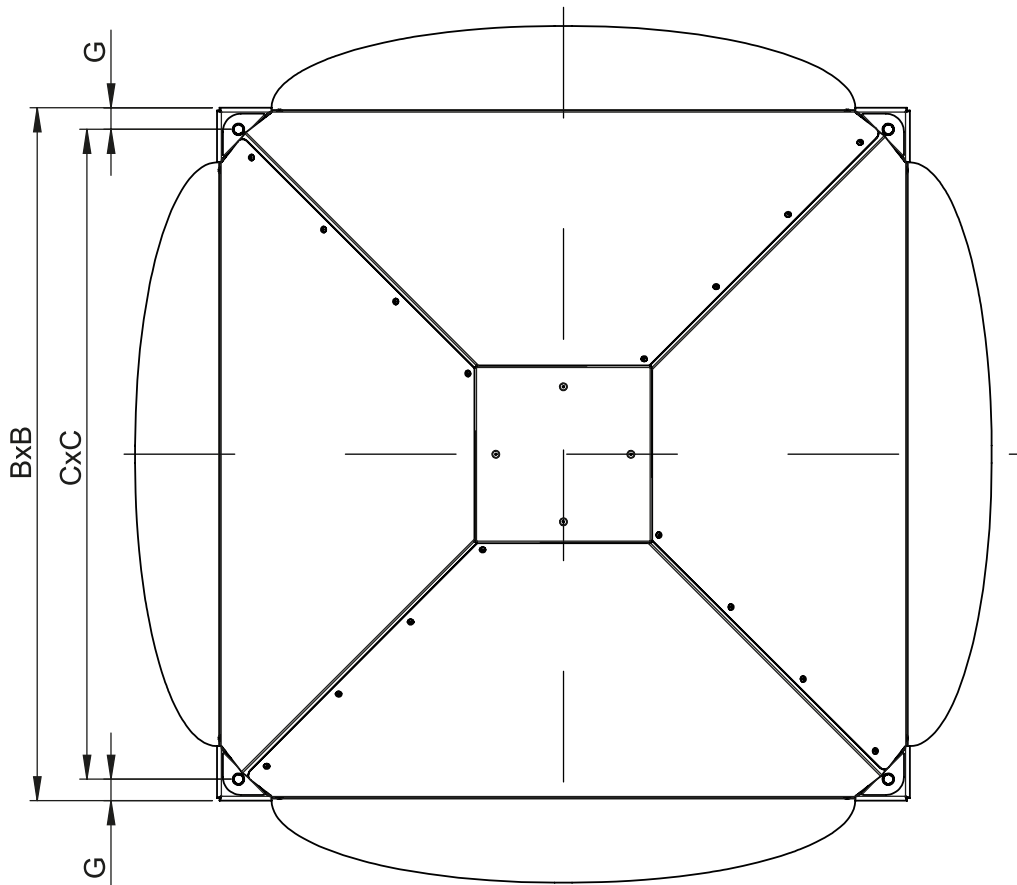
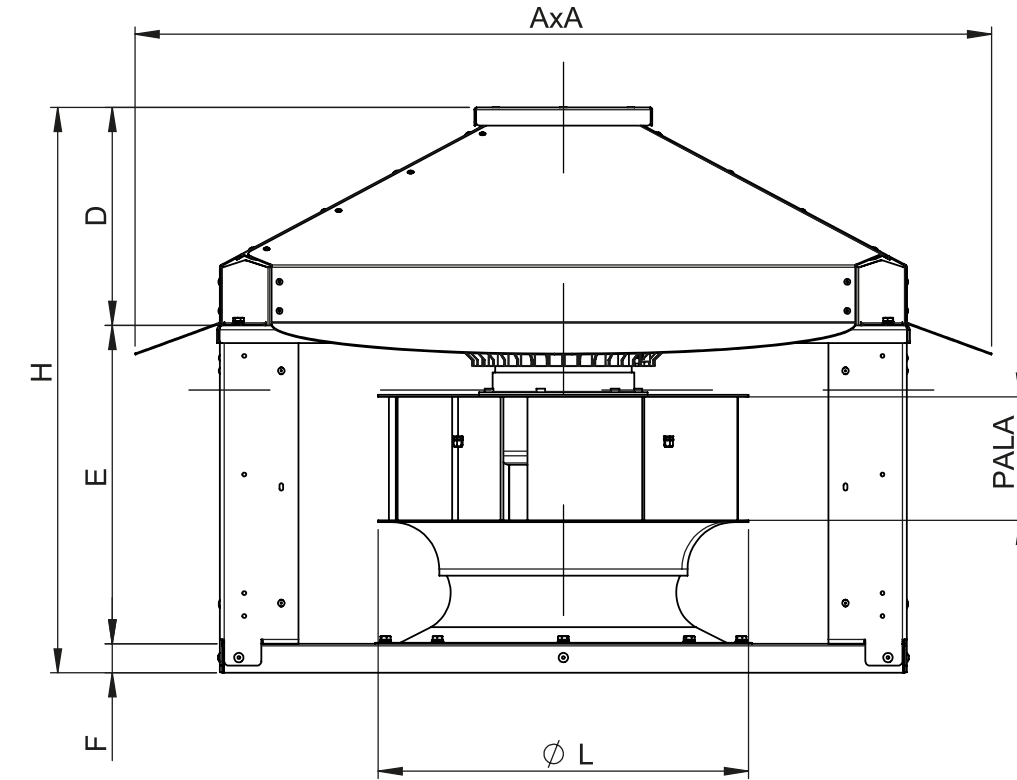
Fan

RPM	2600	Approx. weight	8.4 kg	Max. Flow	870 m³/h
-----	------	----------------	--------	-----------	----------

Motor

Power	0,075 kW	RPM	2600	I max. (230V)	0,6 A	Approx. weight	1.4 kg
-------	----------	-----	------	---------------	-------	----------------	--------

DIMENSIONS




Dimensions (mm)

A	560	B	450	C	398	D	140	E	90
F	30	G	26	H	262	PALA	44	ØL	225

WIRING DIAGRAM

Nº	Signal Señal	Colour Color	Specification Especificación
1	L	Brown Marrón	AC 220V/50Hz
2	N	Blue Azul	AC 220V/50Hz
3	Pe	Yellow-Green Amarillo-Verde	

Nº	Signal Señal	Colour Color	Specification Especificación
1	GND	Blue Azul	
2	Vsp	Yellow Amarillo	0-10 V/PWM
3	Vcc	Red Rojo	DC 10V
4	FG	White Blanco	1 Pulse/R

ACCESSORIES



**SAFETY SWITCH
SWT 25 3P
REF: 21673**



**SPEED CONTROLLER FOR EEC MOTOR
POT (REGC)
REF: 12828 (20146)**



**SPEED CONTROLLER WITH SAFETY SWITCH FOR
EEC MOTOR
PMR
REF: 20841**



**ENKELROOF VERTICAL DISCHARGE
KV SLIMROOF 220
REF: 20825**



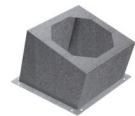
**BTI + AMC MOUNTED
BTI+AMC 410 D=0 C=B
REF: 20864**



**CONECTION FLANGE
MFLAC 20/6-8
REF: 20232**



**CIRCULAR-CIRCULAR ANTI-VIBRATION FLANGE
BAD 6
REF: 20767**



**INCLINED ROOF FAN SUPPORT
BTI 410 D=0 C=B
REF: 20760**



**CIRCULAR SOUND ATTENUATOR IN GALVANISED
STEEL
SILC-MINI 200 C
REF: 20819**