

SLIMROOF 310 M ES (15275)

GENERAL DATA



ROOF FAN WITH ELECTRONIC MOTOR AND ALUMINIUM COWL

MANUFACTURING FEATURES:

- Protection cowl made of anticorrosive treated aluminum easily removable for motor and impeller maintenance (integrated folding system in models 500, 560 and 630).
- The design of the cowl with a rounded shape is specific to minimize the risk of water ingress due to rain.
- Structure in anticorrosive galvanized steel and support frame for adaptation to the roof with anti-bird protection grid.
- High-efficiency backward-curved blade impeller with self-cleaning system. Reinforced polyamide impeller for models 155, 190 and 220. The rest of the models in aluminum.
- EC technology uses integral electronic control to ensure that the motor always runs at optimal load and ensures efficient energy utilization. It incorporates an external rotor EC motor with high efficiency (IE4 for three phase motors and IE5 for single motors) and low noise level. Speed control through a 0-10V or PWM signal. 230V 50/60Hz single-phase power supply for models 155 to 310 and 400V 50/60Hz three-phase power supply for sizes 355 and 630. IP54 and motor class B insulation.

APPLICATIONS

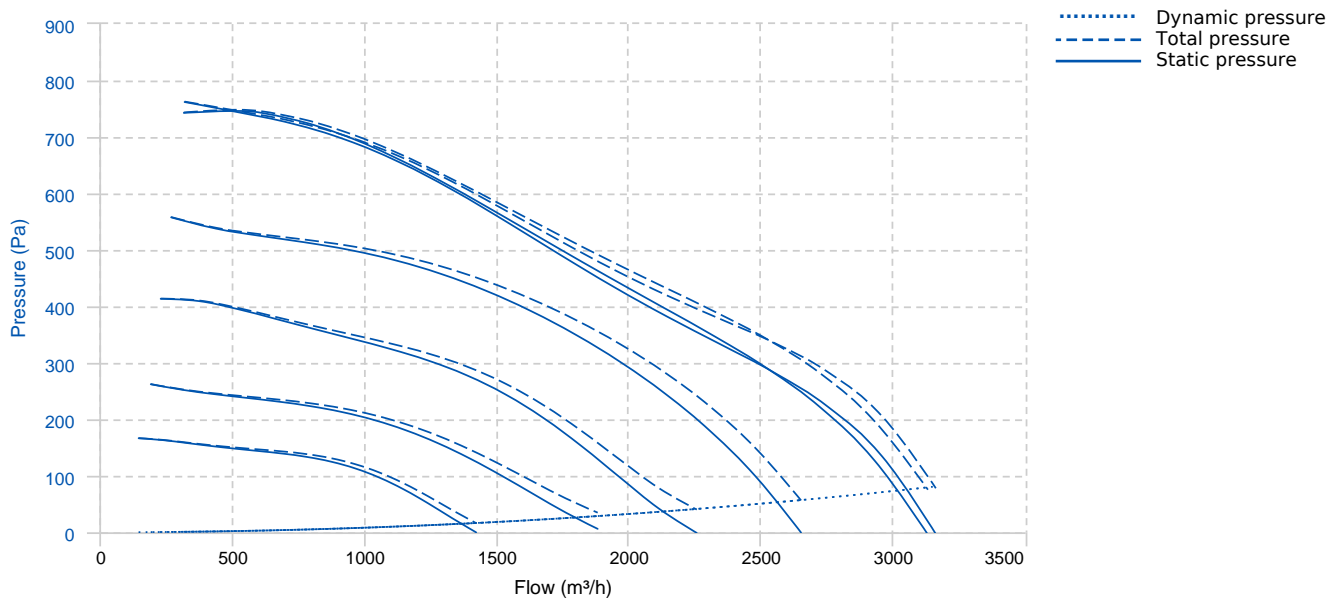
Designed for deck or roof mounting, they are indicated for:

- Smoke extraction.
- Air renewal in all types of buildings and industries.
- Working temperature range from -20°C to 60°C for models size 155-310, -25°C to 60°C for 355-450 sizes, -30°C to 50°C for size 500 and -30°C to 40°C for 560 and 630 models.

UNDER REQUEST

- Fan (size between 250 and 450) with k-factor reading.

PERFORMANCE CURVE



TECHNICAL DATA

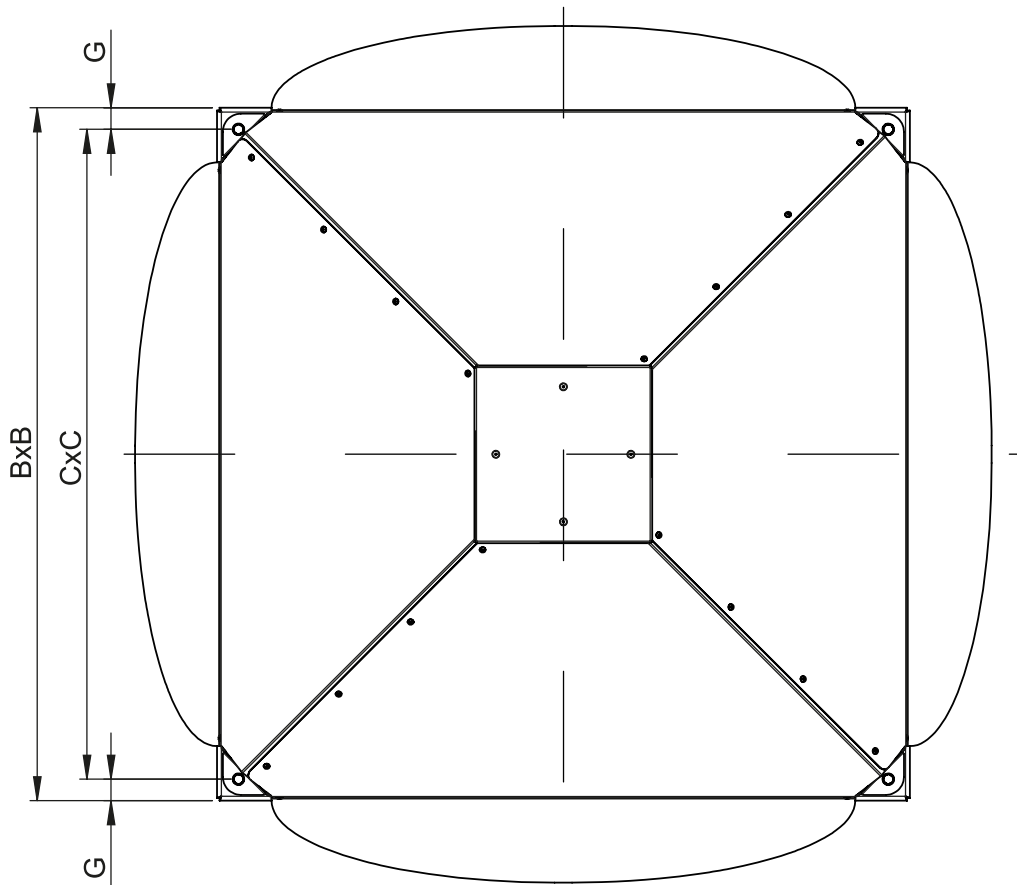
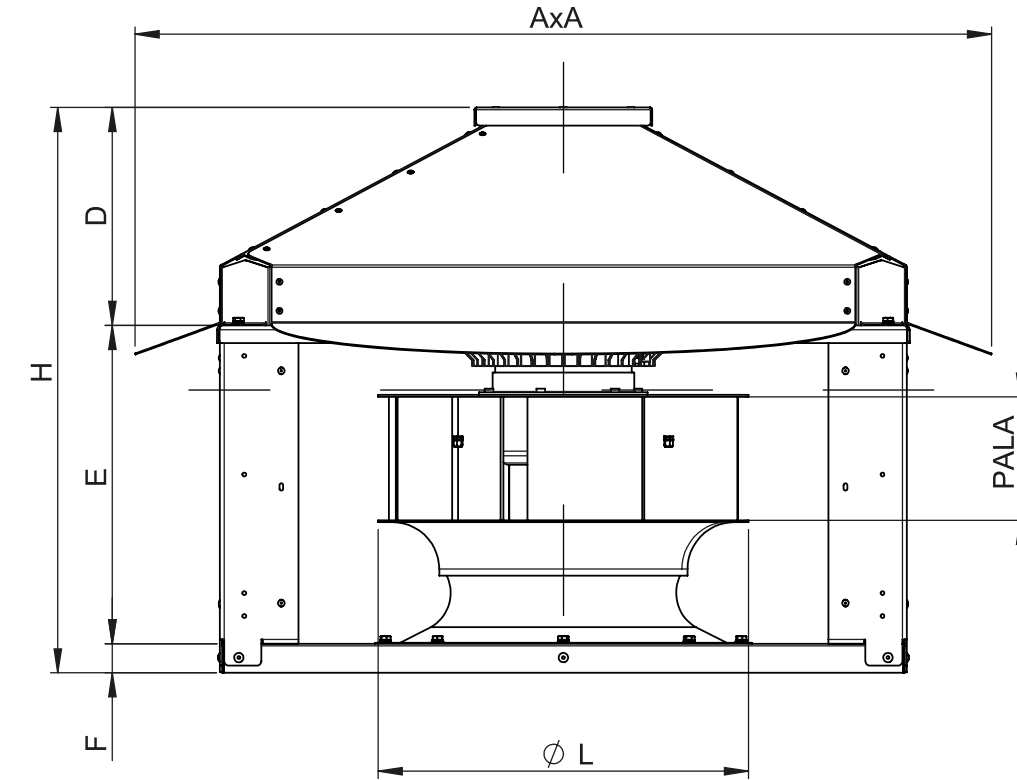
Fan

RPM	2350	Approx. weight	21 kg	Max. Flow	3160 m³/h
-----	------	----------------	-------	-----------	-----------

Motor

Power	0,36 kW	RPM	2350	I max. (230V)	1,7 A	Approx. weight	5 kg
-------	---------	-----	------	---------------	-------	----------------	------

DIMENSIONS




Dimensions (mm)

A	722	B	61	C	550	D	180	E	207
F	30	G	30	H	388	PALA	115	ØL	320

WIRING DIAGRAM

Nº	Signal Señal	Colour Color	Specification Especificación
1	L	Brown Marrón	AC 220V-50/60 Hz
2	N	Blue Azul	AC 220V-50/60 Hz
3	Pe	Yellow-Green Amarillo-Verde	

Nº	Signal Señal	Colour Color	Specification Especificación
1	GND	Blue Azul	
2	Vsp	Yellow Amarillo	0-10 V/PWM
3	Vcc	Red Rojo	DC 10V
4	FG	White Blanco	12 Pulse/R

ACCESSORIES



**SAFETY SWITCH
SWT 25 3P
REF: 21673**



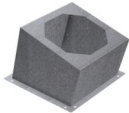
**CIRCULAR-CIRCULAR ANTI-VIBRATION FLANGE
BAD 9
REF: 20769**



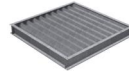
**CONNECTION FLANGE
MFLAC 28/11-31/12
REF: 20235**



**SPEED CONTROLLER WITH SAFETY SWITCH FOR
EEC MOTOR
PMR
REF: 20841**



**INCLINED ROOF FAN SUPPORT
BTI 570 D=0 C=B
REF: 20761**



**DEPRESSION DAMPER (HORIZONTAL or
VERTICAL PLACEMENT)
CMP-HUT 300x310
REF: 2076+3**



**ENKELROOF VERTICAL DISCHARGE
KV SLIMROOF 310
REF: 20827**



**CIRCULAR SOUND ATTENUATOR IN GALVANISED
STEEL
SILC-MINI 315 C
REF: 20821**



**BTI + ACMP MOUNTED
BTI+ACMP 570 D=0 C=B
REF: 20859**



**BTI + AMC MOUNTED
BTI+AMC 570 D=0 C=B
REF: 20865**



**BTI + ACMP+AMC MOUNTED
BTI+ACMP+AMC 570 D=0 C=B
REF: 20869**